

## Setup CD R/W for Recording data files in Windows XP

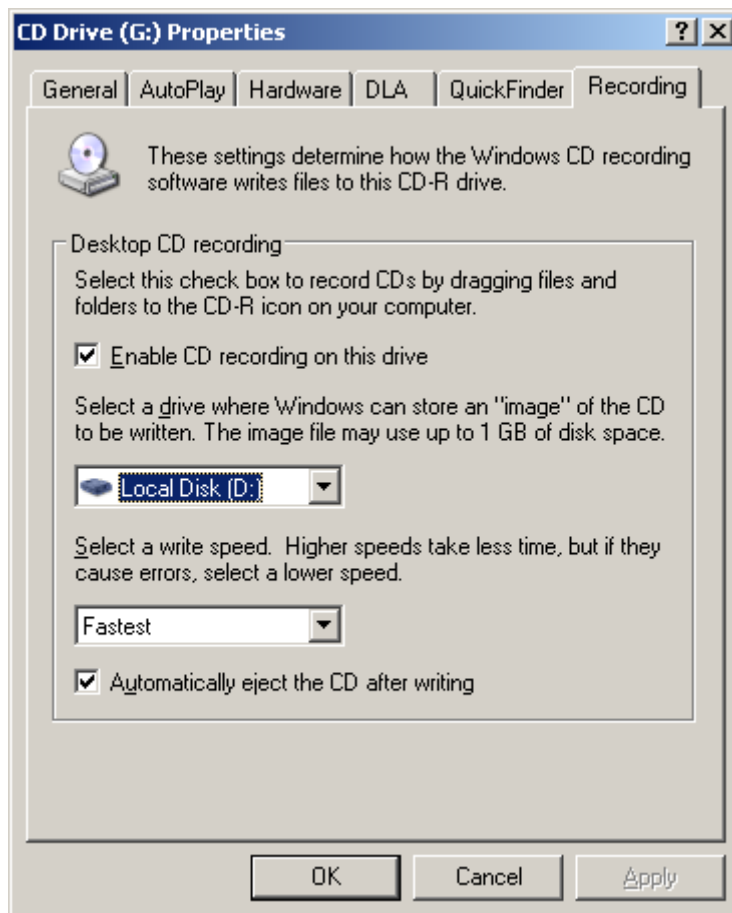
To select a drive or partition for the CD writing temporary storage area

1. Open My Computer.
2. Right-click the CD recording drive, and then click Properties.
3. On the Recording tab, click the CD drive or partition in the Desktop CD recording list.

Check: Enable CD recording on this disc

Check: Automatically eject the CD after writing.

**Note:** Choose the drive on your PC that has the most space available for the "Image" of the CD to be written.



Click OK

## Copy data files and folders to a CD R/W in Windows XP

To select a drive or partition for the CD writing temporary storage area

1. Open My Computer.



2. Right-click the CD recording drive, and then click Properties.

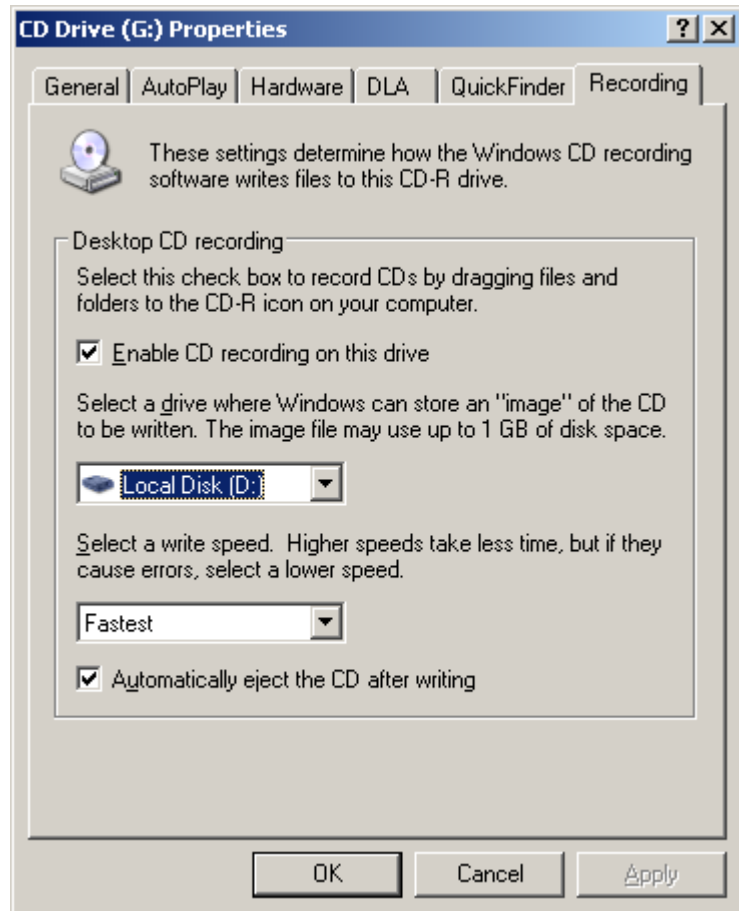
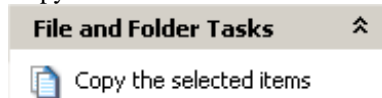
3. On the Recording tab, click the CD drive or partition in the Desktop CD recording list.

4. Insert a blank, writable CD into the CD recorder. *If any programs open, close them.*

5. Open My Computer.

Click the files or folders you want to copy to the CD. To select more than one file, hold down the CTRL key while you click the files you want. [Click Here for Windows Key Help](#)

6. Then, under File and Folder Tasks, click Copy this file, Copy this folder, or Copy the selected items.



7. In the Copy Items dialog box will open, click the CD recording drive, and then click Copy.

8. In My Computer, double-click the CD recording drive.

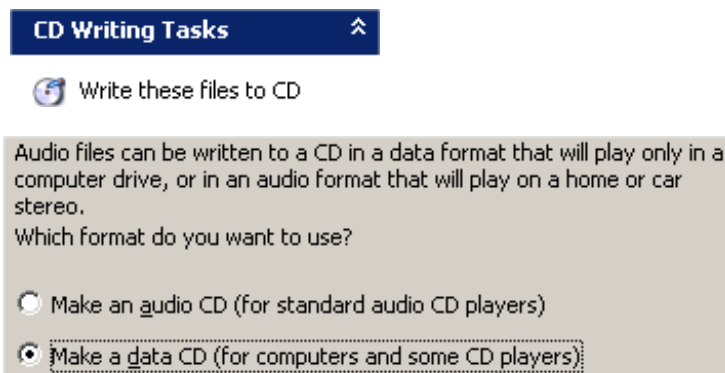
*Windows displays a temporary area where the files are held before they are copied to the CD. (May show in the Taskbar.)*

10. Verify that the files and folders that you intend to copy to the CD appear under Files Ready to be Written to the CD.

11. Under CD Writing Tasks, click Write these files to CD. Windows displays the CD Writing Wizard. Check the Make a data CD (For computers and some DVD players).

*Name the CD*

*Uncheck: Close the Wizard after the files have been written (If You may want a second copy of any CD) Click Finish if no second copy is desired when CD is ejected.*



*Note: Don't select more files than the CD R/W can hold. Normally 650mb on a 700mb CD ( to be on the safe side). CD indexing uses space. Most times if the CD is formatted with another program, you will more than likely lose more recording space than using this method.*